



WELCOME TO THE JUNE NEWS BULLETIN FROM BRIXTON PARISH COUNCIL



LOCAL COUNCIL
AWARD SCHEME
GOLD

June 2026

Welcome to the June bulletin from Brixton Parish Council (BPC) which highlights the key discussions, outcomes, and updates from the BPC meeting held in May.

The Parish Council meets monthly in either the Brixton Community Room (adjacent to St Mary's school) or Sherford Community Hub. The meeting location will be rotated and advertised prior to the meeting. Councillors welcome the opportunity to meet parishioners in the other areas of the parish. Please do come and say hello!

The location of our meetings is constantly reviewed as we are mindful of the safety of parishioners and councillors alike. All working group meetings are continuing via zoom.

Subscribe to the latest news and information from BPC

BPC is producing a monthly newsletter, which will be available on the BPC website. All agendas and minutes for BPC are also available.

www.brixtonparishcouncil.gov.uk

If you would like to receive this bulletin electronically, please subscribe on [Join our mailing list - Brixton Parish Council](#)

BPC Councillors

At the annual meeting of BPC the election for Chair and Vice Chair took place - Cllr Liz Hitchins was elected Chair and Cllr Michael Wills Vice Chair.

Councillors

Cllr Liz Hitchins - Chair
Cllr Michael Wills – Vice Chair
Cllr Ian Martin
Cllr Terry Clegg
Cllr Stuart Nix
Cllr Neil Hawken
Cllr Rachael Gillard
Cllr Prem MacLennan
Cllr Tony Carson

To contact any councillor please use the following email format

firstname.surname@brixtonparishcouncil.gov.uk
and Clerk – Kirstie Aldridge
clerk@brixtonparishcouncil.gov.uk

Local Government Reorganisation

The link to Local Government Reorganisation in Devon where all the plans can be viewed:

<https://www.devonlgr.co.uk/>

BPC understands that a decision will be made by Government by 19th July 2026 which will be the subject of further consultation,

Highways

BPC Traffic Management Working Group continues to meet remotely with DCC Highways Officer on a quarterly basis and the next meeting will be held in September. If you would like to attend or have any highways related issues or any questions for a future meeting, please email clerk@brixtonparishcouncil.gov.uk

Red Lion Hill / Stamps Hill

DCC Highway Authority is currently exploring alternative funding/delivery options to ensure the traffic calming scheme costs come within the available budget

The Green

An indicative plan with purely 'no parking restrictions (double yellow lines) marked around The Green, as well as along part of A379 has been put forward for DCC to consider which will be subject to public consultation.

Schemes are being completed in tranches and this may be part of 'tranche 3' (towards the end of this financial year).

Speed Limits within Brixton

BPC approached Yealmpton Parish Council (YPC) last year seeking support for a reduction of the speed limit on the A379 between Brixton and Yealmpton from 60mph to 40mph. At its February meeting, YPC voted against the proposal after an evenly split vote was decided by the Chairman's casting vote. Following recent correspondence from parishioners and comments from County Councillor Thomas, the matter was revisited by BPC. Having considered the latest information, councillors unanimously agreed to invite YPC to work with BPC to pursue the 40mph limit and committed to contributing half of the anticipated costs.

Monkey Lane

Monkey Lane has been reclassified as a multi-use lane (Pedestrians, Cyclists and Horse Riders) with a prohibition of vehicles except for access. Progress is being made on improving pedestrian access from Monkey Lane to Sherford Country Park, with a new path, running alongside the hedge into the Sherford Country Park from the Sherford end of Monkey Lane, this will join with PROW 18 to West Sherford. Existing gates remain in place but are unlocked and the paths are accessible.

Stopping Up Order

The Sherford Consortium has applied for a short section of public highway to be permanently closed, known as 'Road Past Vealeholme', the section of road is 282 meters long and runs between Main Street in Sherford and Plympton Hill. As this proposal involved the stopping-up of a public highway, a formal road stopping-up order was required. Confirmation has been received from The Secretary of State for Transport stating that this Order has not 'been made'

Dawes Lane

Following extensive repairs Dawes Lane reopened on 15th May and BPC has received excellent feedback

Temporary Traffic Regulation Orders

- A379 Elburton Road (near Brixton Road Station Bridge) – Monday 21st July 2025 – Friday 10th July 2026

- Road past Vealeholme (for Deep Lane Cycle Bridge Scheme) – Wed 22nd April 2026 – Thurs 21st Oct 2027

- Deep Lane to Hareston Cross – Monday 1st June – Friday 5th June 2026

- Road past Wiverton House – Friday 5th June – Friday 9th June 2026

Climate Change

Brixton Parish Environment Working Group

This group continues to meet regularly via Zoom with the next meeting in September. All are welcome to join and the agenda / zoom details will be placed on the website nearer the time.

Forthcoming events

Following the success of the walk from Brixton to Sherford, via Monkey Lane, in April the next walk has provisionally been arranged for 5th September 2026. This will be advertised nearer the time on the website, Facebook and the noticeboards. Watch this space!

River Yealm Water Quality Group

This working group of representatives from the 7 Riparian Parish Councils in the River Yealm Catchment area together with other interested parties continues to meet to work with Environment Agency and South West Water to monitor the quality of water in the River Yealm particularly relating to the discharge of sewage into the river at times of heavy rainfall. For more information email

clerk@brixtonparishcouncil.gov.uk

The River Yealm Water Quality Group has a fantastic website dedicated to the work of the group where the findings from the latest River Yealm Water Quality Westcountry Rivers Trust Citizen Science Investigation are published.

<https://www.rywqg.com/>

Land at Cofflete Creek

BPC is in the process of creating a community amenity space for the residents of Brixton Parish on the site of the former Cofflete Mill through careful consideration of the significant historic and environmental value of this piece of land to the community.

South Devon National Landscapes are continuing to work on producing a second interpretation board. BPC has commissioned a contractor to install additional fencing along the retaining wall to enhance safety, the addition of shelving and seating in the bird hide to improve usability for visitors along with decorative fingerposts.

If you would like to get involved please contact

clerk@brixtonparishcouncil.gov.uk

Hedgehog signs

BPC is awaiting a final quote for "saving hedgehogs" signs which will incorporate designs from the children of St Mary's School.

Accessible Picnic Bench

BPC has successfully secured funding from the South Devon National Landscape's Defra Access for All Fund for one wheelchair-accessible picnic bench. The bench will be placed near the 'owl seat' on the corner of Steer Point Road and Elliots Hill.

Silverbridge Way Extension

The proposed route was walked with a SHDC planning officer, who advised that various reports will be required including an Environmental Impact Assessment. The officer stated that 'a sensitively designed proposal which accommodates the advice is capable of officer support'. The working group has since considered the scope and likely costs of the necessary reports, and BPC has agreed to support progressing the work by seeking three quotations and, in principle, contributing 50% of the estimated costs. BPC agreed that it would be helpful for YPC discuss this matter at its next Parish Council meeting and to seek approval of the estimated costings in principle. Plans are progressing to install a tree trunk along the path instead of a bench.

Brixton Parish Neighbourhood Plan

A meeting of the Brixton Neighbourhood Plan Group was held on Thursday 8th May. A couple of the policies are no longer current due to changes in the NPPF and will need to be reviewed. A zoom meeting will be arranged with SHDC officer leading on Neighbourhood Planning, and Cllr Hitchins will confirm the number of affordable houses required, including the number of bedrooms.

Brixton Community Emergency Plan

A Community Engagement Event run by Devon Communities Together (DCT) was held on 4th March in the Sherford Community Hub to start thinking about emergency planning across the parish. If you are interested in participating formulating the CEP, please email clerk@brixtonparishcouncil.gov.uk

Cost Of Living Crisis

A small working group of representatives from the community meets regularly to discuss the impact of the Cost of Living Crisis for residents

The warm hub in The Foxhound is popular on Thursday afternoons and Monday lunch times. This will continue as a regular community event to help reduce isolation and loneliness. So please do pop in for a chat.

The group fund raises to purchase tinned food, personal hygiene and household items which are available daily in the Church porch when the church is unlocked.

Street sweeping / litter picking

Thank you to the 10 volunteers who undertook street sweeping on 2nd May

Defibrillators

Brixton has SIX defibrillators at different locations in the parish.

The sites are as follows:

- Outside Venn Court
- Outside the main entrance door to Brixton St Mary's Primary School
- In the former phone box on The Green
- In the former phone box at Fordbrook
- Plymstock Albion Oaks, Horsham sports field
- Entrance to Chittleburn Business Park

Administration

BPC Roles and Responsibilities

At the Annual meeting of BPC councillors reviewed and reappointed councillors to external organisations, committees, and individual responsibilities. This ensures that all council representation and delegated roles are confirmed for the forthcoming year, maintaining clear governance arrangements and continuity in BPC's work.

BPC Policies

BPC policies are reviewed on an annual rolling programme, with different subject areas considered each month rather than all at once, ensuring a regular and structured oversight.

BPC Training

BPC is also undertaking relevant ongoing training and has recently confirmed that the Clerk and all councillors will undertake GDPR Data Protection Essentials training

Forthcoming Parish Council meetings all starting at 7.00pm

June	Brixton	24th June
July	Sherford	22nd July
August	No meeting	
September	Brixton	30th Sept
October	Sherford	21st Oct
November	Brixton	25th Nov
December	No meeting	

There is a calendar of events available on the BPC website.

Any changes will be conveyed on www.brixtonparishcouncil.gov.uk noticeboards and the Facebook pages. To keep up to date with the parish council please visit our website, www.brixtonparishcouncil.gov.uk or by following the Facebook Community pages:

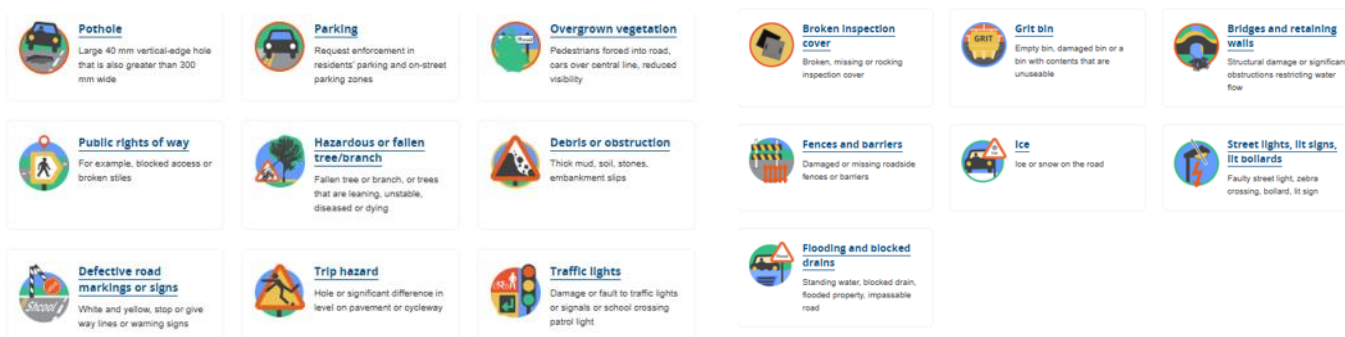
LOVEBrixtonDevon
Brixton Village

If you have any question or queries regarding the work of BPC, please do not hesitate to contact Kirstie Aldridge, Clerk via email - clerk@brixtonparishcouncil.gov.uk

Useful Contacts and Links

Report a Problem South Hams District Council

South Hams District Council should be contacted via the [Report It | South Hams District Council](#) page. Here you can report full litter bins, planning breaches, missed recycling collections and nuisances such as smoke and bonfires amongst the others listed below:



Report a Problem Devon County Council

Devon County Council are responsible for our roads and any issues should be reported via the [Report a problem - Roads and transport](#) page. Here you can report any of the issues listed below

Abandoned vehicle

Litter or Leaves

Missed Bin

Dead animals

Full litter or dog bin

Recycling Bank

Fly Tipping

Car Park Problem

Public Toilets

Stray Dogs

Dog fouling

Lost Dogs

Planning Breach

Nuisance

Housing Disrepair

Flooding

Anything else

Play Park Issue